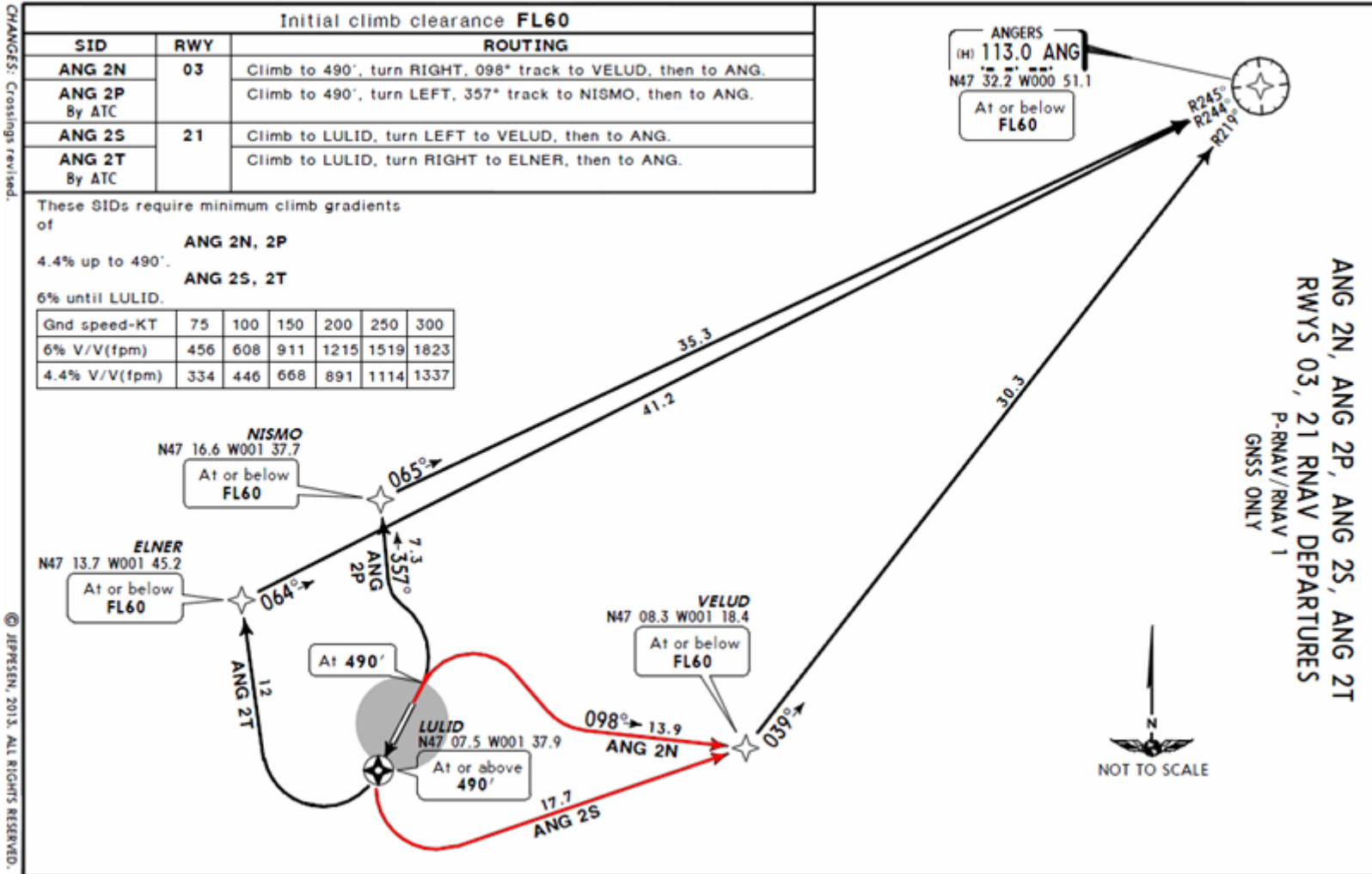


Nantes Airport Departure Procedures

LFRS/NTE **JEPPESEN NANTES/ATLANTIQUE, FRANCE**
NANTES/ATLANTIQUE 18 OCT 13 **10-3** **RNAV SID**

Apt Elev 90'	Trans level: By ATC Trans alt: 5000'
	1. EXPECT close-in obstacles.
	2. Except for safety reasons, SID track must be strictly followed and cannot be modified below 3000' AMSL minimum and only with ATC clearance.

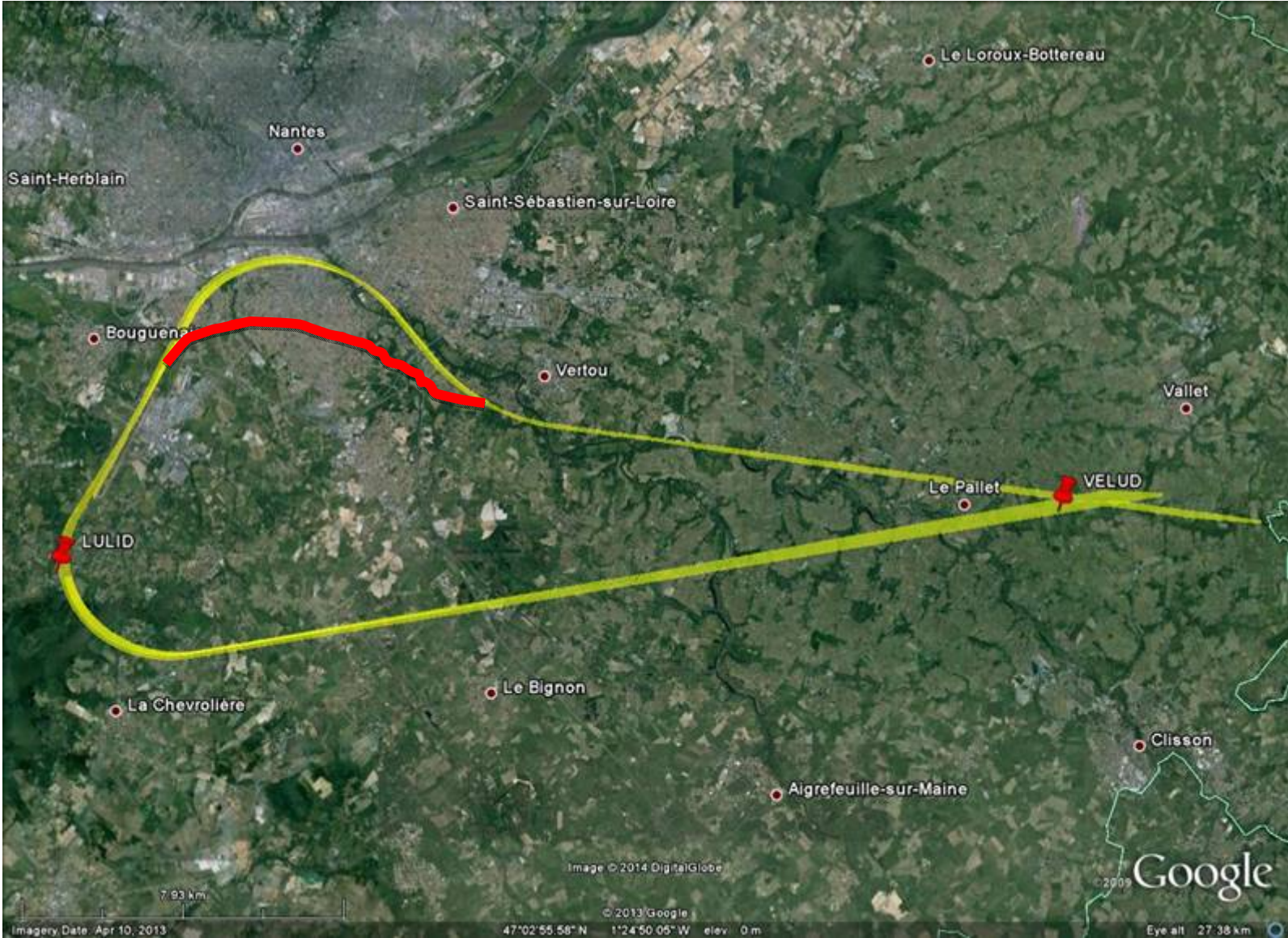


ANG 2S

CHANGES: Crossings revised.

© JEPPESEN, 2013. ALL RIGHTS RESERVED.

Noise Footprint Analysis

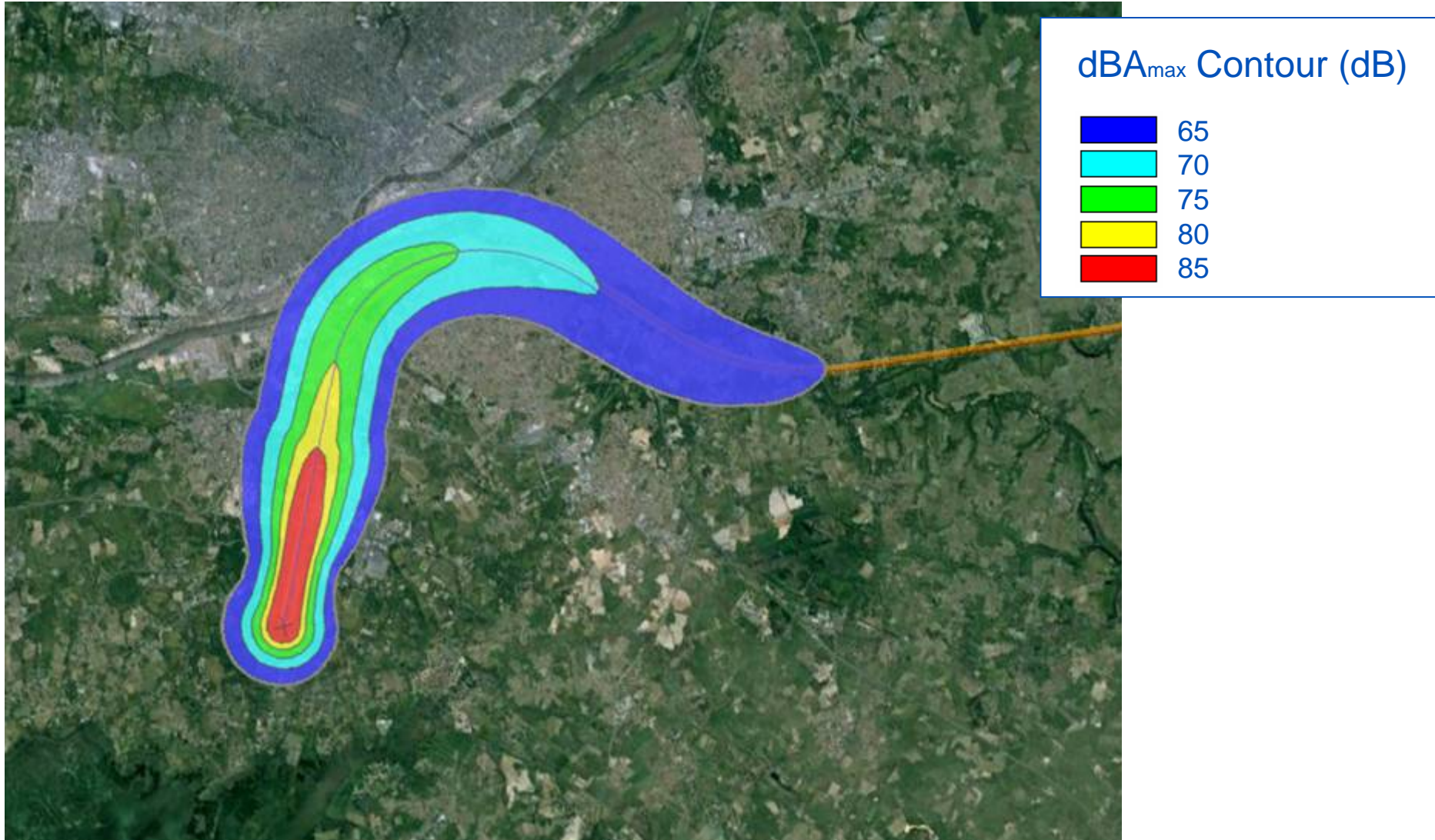


Noise Footprint Analysis



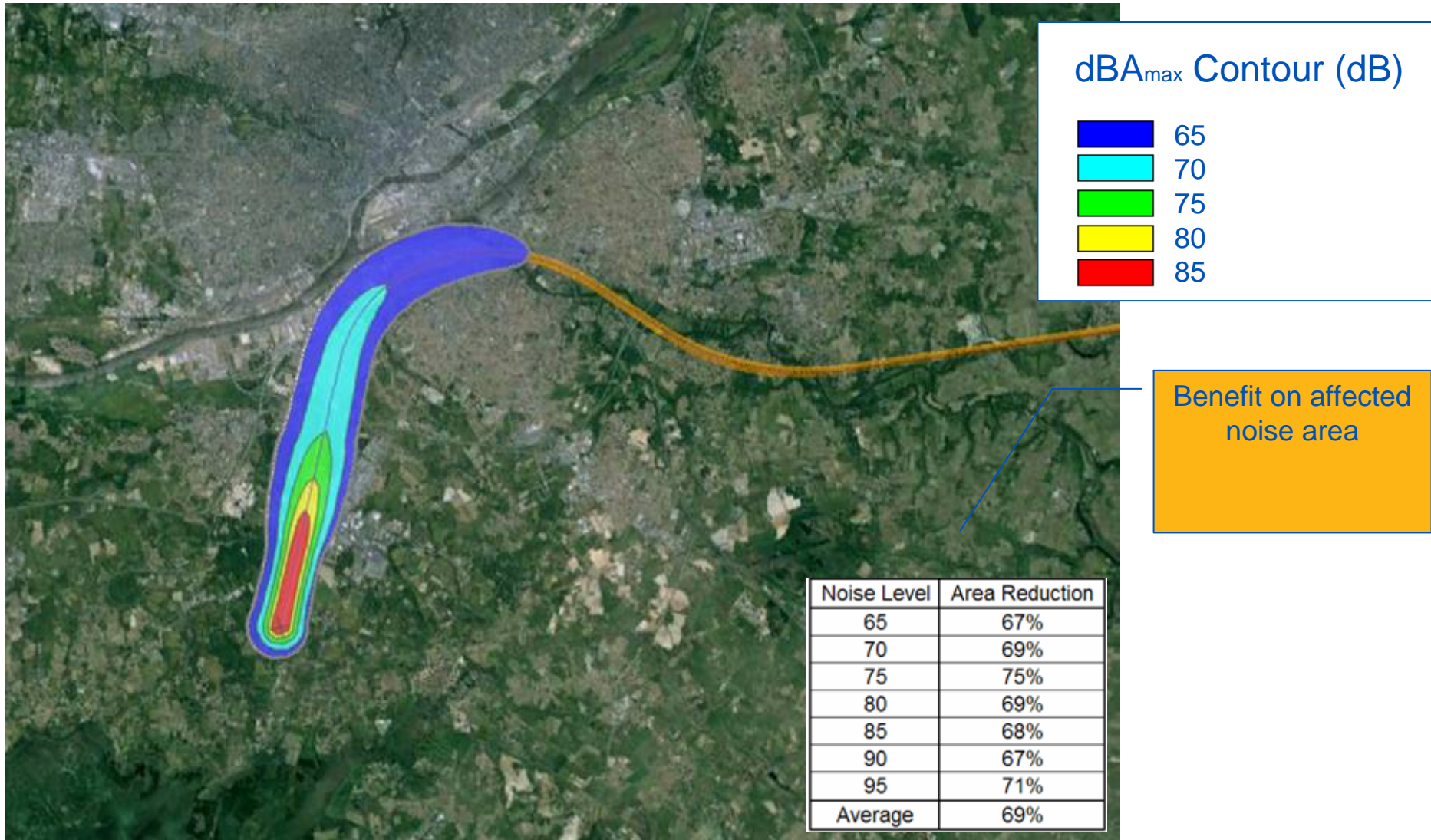
Results

Departure ANG2N – Current generation aircraft



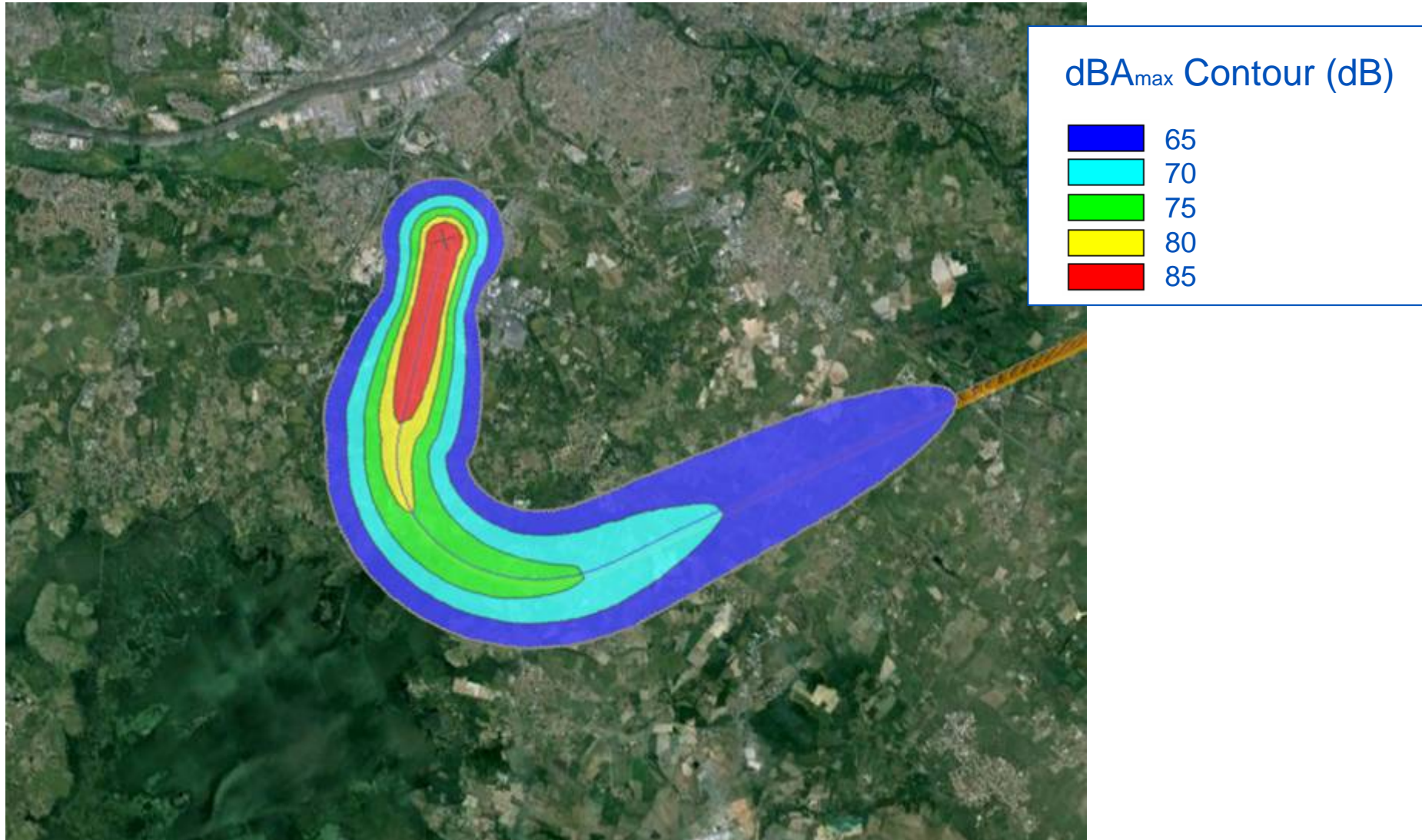
Results

Departure ANG2N – Re-engined aircraft



Results

Departure ANG2S – Current generation aircraft



Results

Departure ANG2S – Re-engined aircraft

